

CHRISTMAS 2022

- AT -



MASQUERADE

THE GALLERY

FREEMASON'S HALL







## WELCOME

---

Join us for a Masquerade party in the heart of London's Covent Garden at the iconic art deco Freemasons' Hall. A whirl of decadence, danger and delight awaits you with our sensational Christmas party at The Masquerade Club. Feast all your senses on our stunning recreation of the Venetian carnival, complete with masked sellers, stunning theming and our talented DJ, there will be plenty of fun and dancing until carriages at 1AM. This amazing Grade II listed venue is guaranteed to impress with the sheer scale and grandeur of its setting. Welcome your guests with a prosecco reception, followed by your choice of delicious food options, and generous all-inclusive house drinks packages. Upgrade options include spirit packages, delicious canapés, a four-piece band and sensational entertainment acts. Excite and impress your guests in Christmas 2022, with this sensational Masquerade party.

This unique venue is available for exclusive events, with capacity for up to 400 standing guests or 250 seated.



# YOUR PARTY JOURNEY

Below is an example timeline. You will be able to tailor your timings to you and your guests' requirements with your dedicated Account Manager.



## RECEPTION

**18:30**  
DOORS  
OPEN

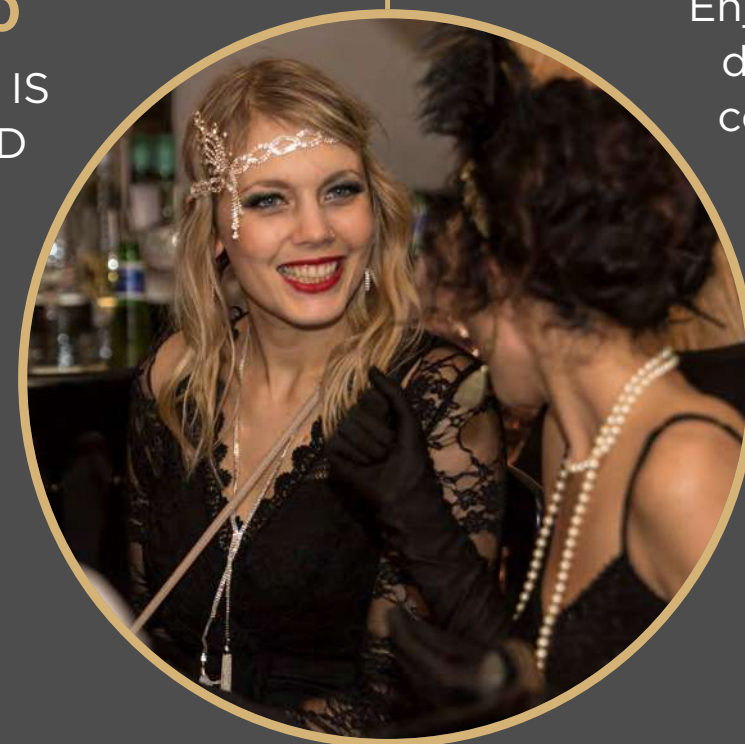
Arrive at Freemasons' Hall and be greeted with a glass of sparkling wine.



## DINNER

**20.00**  
DINNER IS  
SERVED

Enjoy a lavish three-course dinner or delicious two-course bowl food menu.



## DISCO

**22.00**  
DISCO  
BEGINS



**00.30**  
BAR  
CLOSES

**01.00**  
CARRIAGES







## DRINKS RECEPTION

- ▷ Come in out of the cold and dust the snow off your coats...
- ▷ We will greet you with an ice-cold Bellini on arrival.
- ▷ A stunning mirrored bar will feature with a soft seating area.





# DINNER

- The dining room has capacity for 250 seated guests or 400 standing.
- Choose from a lavish three-course dinner, or for standing events we can circulate a delicious two-course bowl food menu, with 6 bowls per person.
- This stunning ballroom will be beautifully lit with stunning feathered table arrangements.





## AFTER DINNER

- Beyond the tables lies the black and white contrasting dancefloor
- The stage will be flanked by two huge masks supported by moving light fixtures on the ivy interwoven truss.
- Let the dancing begin!





# PACKAGE INCLUSIONS

- ✔ Exclusive venue hire from 11:00-16:30 OR 18:30 - 01:00 (extension until 2am available).
- ✔ Stunning Masquerade Club theming throughout the venue.
- ✔ Sparkling wine reception on arrival.
- ✔ Bowl food menu including 6 bowls per person OR Three course seated dinner by Moving Venue.
- ✔ Unlimited house wine, house beer and soft drinks all evening or ½ bottle of house wine and water per person.
- ✔ Pre-event menu tasting.
- ✔ Large specification of AV – including stage, dance floor, and intelligent sound and lighting package.
- ✔ State-of-the-art dance floor and professional DJ.
- ✔ Event Security.
- ✔ Event First Aider.
- ✔ Dedicated Event Manager.
- ✔ Cloakroom Facilities.

These inclusions are subject to change dependent on your requirements.

We believe in making sure your guests have the best night possible, so we also have various upgrade options available. Speak to your Account Manager to find out how we can make your guests feel extra special.



## MENU

### STARTER

London cured smoked salmon, beetroot, apple and dill salad, apple pancakes, caviar crème fresh (S)

Roasted fig tart fine with mozzarella, honey pecan crumble (F)

Wild mushroom and truffle vol-au-vent, mushroom (M)

### MAIN

Slow braised beef, truffle mash, sticky glazed parsnip, buttered kale, red wine sauce (B)

Broccoli, spinach and ricotta wellington, leek mash, roasted roots (W)

Rosemary and butter roast breast of Cotswold white chicken, potato gratin, caramelised white onion and sage puree, roast winter greens, thyme and red wine sauce (C)

### DESSERT

Black forest gâteau cone

Chocolate and Earl Grey tart, raspberry chocolate star on top

Sticky toffee pudding

Chocolate stout cake



# CATERING

Moving Venue have been impressing clients with outstanding events since 1984. Delivering delicious, seasonal and creative dishes with operational excellence, which has secured us a place on the accredited supplier list of over 50 venues, in and around London. From gala dinners, to intimate cocktail receptions and immersive conferences, they have the catering to match your event and guarantee the food will be a talking point long after the day is finished.



"Hearst boasts a robust and established relationship with Moving Venue that sees them act as an extension of the core team. This set creates an environment that fosters the very best results. The team have continuously delighted and surprised the Hearst team and their guests. It is without hesitation that Hearst offers Moving Venue a whole hearted recommendation."

**Hearst Live**



# ENTERTAINMENT

We can supply a huge range of additional entertainment options for your event. Please contact us to discuss your event in detail and we will help make it unique and special to you.

- ✔ Bands
- ✔ Dancers
- ✔ Photo booths
- ✔ Casino tables
- ✔ Magicians
- ✔ Cocktail bars
- ✔ Espresso bars





# PRODUCTION SPECIFICATION



## ENTRANCE

- ▷ 10 x Wireless Prolyte LED uplighters to entrance walkway

## RECEPTION SPACE

- ▷ 8 x Wireless Prolyte LED uplighters to columns and walls
- ▷ 4 x Source Four profile breakup wash to floor area
- ▷ 2 x Source Four profile breakup wash to opposite wall (Gobo specials)
- ▷ 3 x 650w Fresnel lighting to bar counter tops
- ▷ 1 x Source 4 profile stage lighting
- ▷ EV SX 300 x 2 band and announcement system
- ▷ Crown Xti 4002 Amplifier
- ▷ Soundcraft EMP 6 Mixing Console
- ▷ Mic and input allowance for band. XLR link from main room
- ▷ Sennheiser G3 Radio mic kit inc. licences
- ▷ Truss goalpost located behind bar to support drape & lighting - 10m x 5m
- ▷ Power distribution and dimming

## DINING ROOM

- ▷ 2 x 4m silver truss columns
- ▷ 3 x Source Four profile for breakup wash across tables and floor area
- ▷ 4way pinspot banks to highlight tables
- ▷ 2 x Colour Block LED baton uplighters to columns
- ▷ 18 x Wireless Prolyte LED uplighters to columns
- ▷ 8 x GLP Impression moving head light rigged to truss rig for stage lighting
- ▷ 4 x Martin Smart Mac moving head spotlight, stage and plinth mounted for dance floor lighting/ceiling break up
- ▷ 6 x LED slim par truss warmers to stage truss rig uprights
- ▷ 4 x 650w Fresnel rigged to truss for stage lighting
- ▷ 4 x signal distribution and control
- ▷ 1 Avolites Quartz lighting console
- ▷ 2 x Martin Audio Backline X15 tops, rigged to truss
- ▷ 2 x Martin Audio Backline X115 subs
- ▷ 2 x HK Pro:8 delay speaker
- ▷ 4 x Lab Gruppen PLM5K44 amplifiers
- ▷ Yamaha QL1 Digital Mixing console
- ▷ Band mic, IEM and stage monitor package
- ▷ 1 x 6m square truss system in silver at 4m high
- ▷ Power distribution from venue 125/3ph supply and dimming



# FLOOR PLAN

---





# FIND US

---

## ADDRESS

THE MASQUERADE CLUB  
FREEMASONS' HALL  
60 GREAT QUEEN ST  
LONDON WC2B 5AZ

## PUBLIC TRANSPORT

COVENT GARDEN TUBE  
STATION  
HOLBORN TUBE STATION







# MASQUERADE

THE GALLERY

FREEMASON'S HALL

