



PILAR
HVL

EVENTS &
PRIVATE PARTIES

WELCOME TO PILLAR HALL

Located at the heart of the new Olympia London redevelopment, Pillar Hall is West London's coolest new hospitality destination. With a visually dramatic restaurant, bar and events space spread over 30,000 sqft, Pillar Hall offers a striking background for any private party or event.

Set over three floors and a mezzanine, the Grade II* Listed building offers striking architecture, versatile layouts and luxe furnishings, perfect for elevating any private hire experience.

Coming soon! Upstairs at Pillar Hall Event space is a striking double-height space with a spectacular mezzanine. Open for private events. Once home to one of the UK's first cinemas and Vivienne Westwood's debut catwalk show, the room has history!

Idalia Restaurant is now open for lunch, dinner and private events. Idalia occupies the ground floor of the beautiful Grade II* listed Pillar Hall



THE OLYMPIA REDEVELOPMENT

Olympia is undergoing a landmark transformation, with a £1.3 billion regeneration project set to establish the area as London's newest creative and cultural district.

Launching in Summer 2026, this ambitious redevelopment blends heritage and innovation, breathing new life into the site. The project includes the renovation of the historic Pillar Hall and Exhibition Halls alongside the creation of a brand-new 4,000-capacity music venue, a cutting-edge theatre, state-of-the-art offices, and two world-class hotels.

Designed by acclaimed architects Heatherwick Studio, the 14-acre destination will feature a dynamic mix of restaurants, performance venues, office spaces, and 2.5 acres of landscaped public realm. While introducing striking new architecture, the Grade II-listed Olympia National Hall and Olympia Grand Hall have been retained and meticulously restored, preserving their iconic character.

This major redevelopment marks a new era for Olympia and the wider area, positioning the site as a premier events destination and a vibrant cultural hub for West London locals and visitors alike.



SPACES FOR EVERY OCCASION

PILLAR HALL EVENT SPACE

Max capacity: 350 seated | 525 standing

IDALIA RESTAURANT

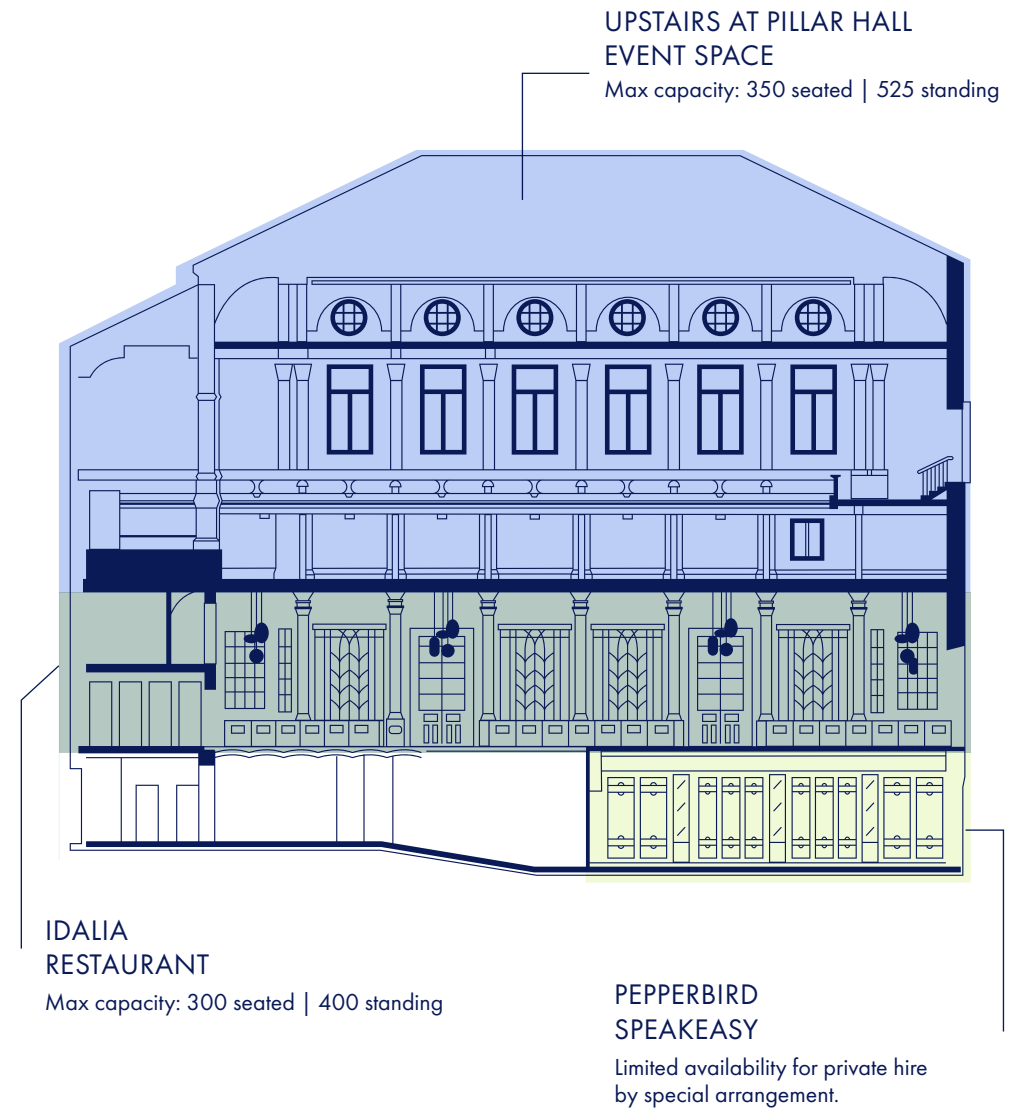
Max capacity: 300 seated | 500 standing

PRIVATE DINING GARDEN ROOM

Max capacity: 45 seated | 70 standing

PEPPERBIRD SPEAKEASY

Limited availability for private hire
by special arrangement.



Upstairs at
PILAR
HALL



EVENT SPACE

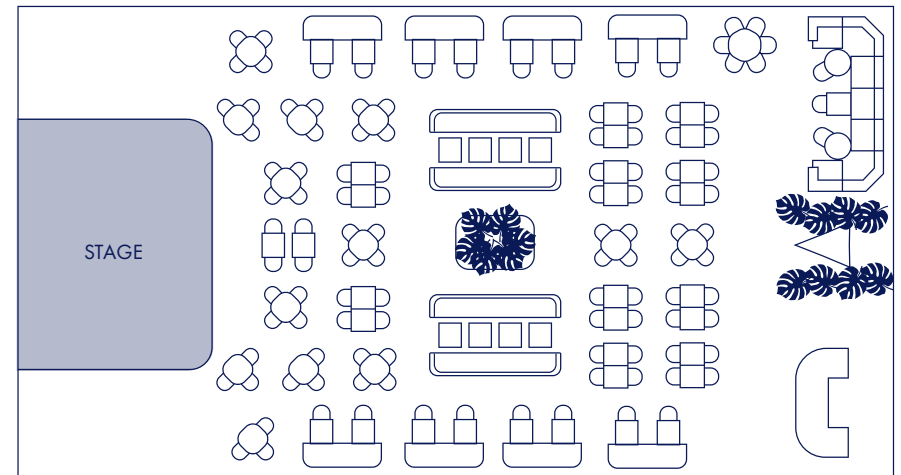


A show-stopping venue for weddings, private parties, and corporate events. Bathed in natural light and styled with a chic, neutral palette, it's the perfect blank canvas to transform into your own unforgettable setting.

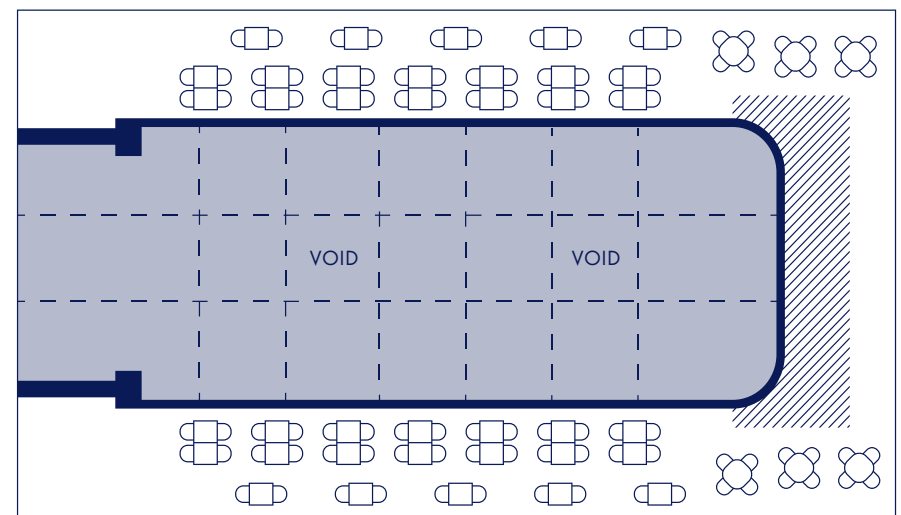
FLOOR:
FIRST AND MEZZANINE

CAPACITIES:
MAIN FLOOR: 250 seated | 350 standing
HALF MEZZANINE: 50 seated | 70 standing
FULL MEZZANINE: 100 seated | 175 Standing
EXCLUSIVE HIRE: 350 seated | 525 standing

1ST FLOOR



MEZZANINE



RESTAURANT

IDALIA

A romantic botanically inspired venue comprising a restaurant, central bar, conservatory cafe and an indoor terrace spilling into Olympia's Grand Hall.

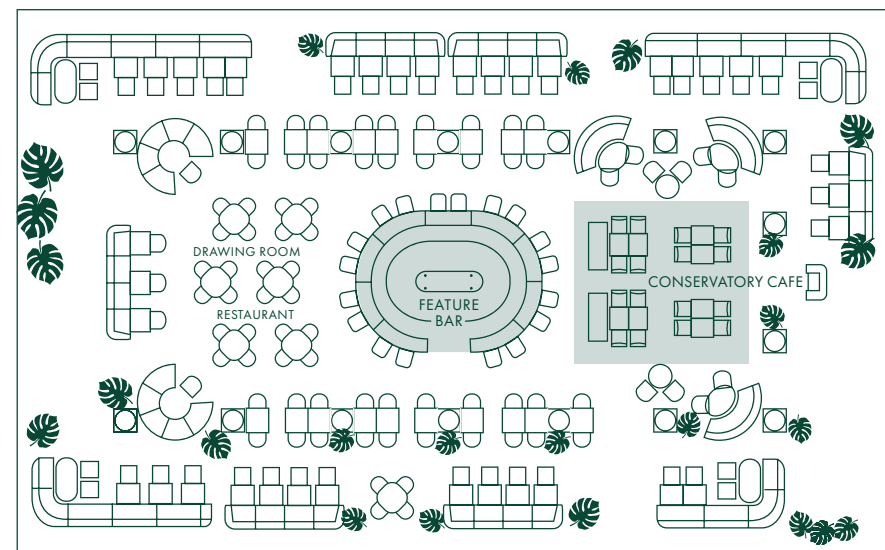
FLOOR:
GROUND FLOOR

CAPACITIES:
SEMI-PRIVATE DINING:
100 seated | 150 standing

EXCLUSIVE HIRE:
300 seated | 550 standing

PRIVATE DINING | GARDEN ROOM
45 seated | 70 standing

IDALIA RESTAURANT



SPEAKEASY

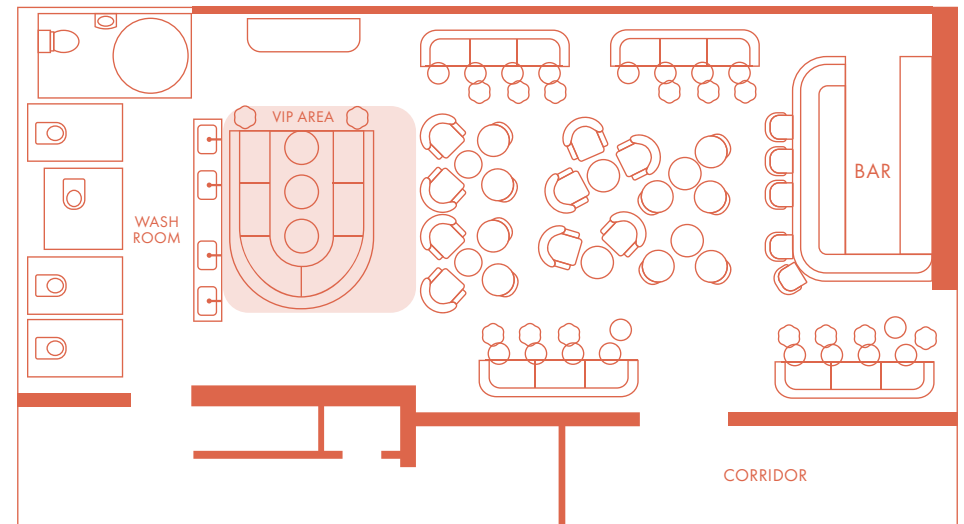
PEPPERBIRD

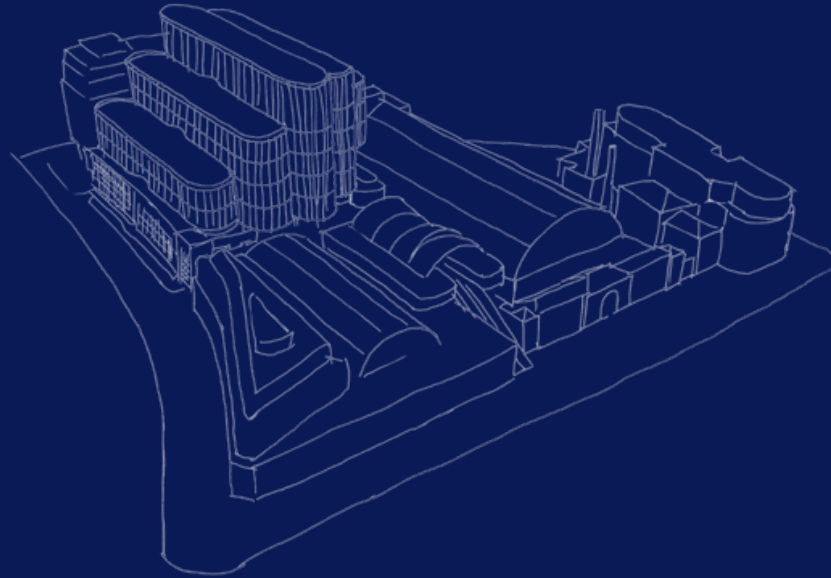
A relaxed and moody setting
with a touch of luxury for the
ultimate intimate 'do.

FLOOR:
BASEMENT

CAPACITIES:
LIMITED AVAILABILITY
FOR PRIVATE HIRE BY SPECIAL
ARRANGEMENT.

PEPPERBIRD





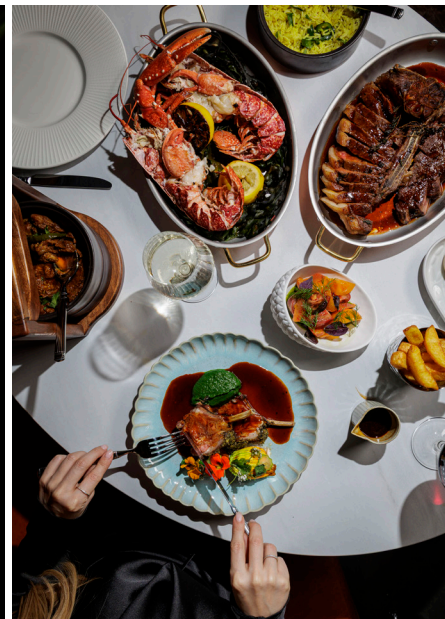
GRAND EVENTS

Looking for an evening bigger event space? Talk to the team about our 1000+ capacity options. From multifunctioning rooms to decadent balls, Pillar Hall along with our partners will help you put on a truly spectacular event where the sky really is the limit. Available on Request.



THE FOOD

Led by Executive Chef Samantha Williams (former group executive chef at Angela Hartnett & Jeremy King) and Executive Pastry Chef Lorena Tomassi (Ex-Claud Bosi & Caprice Holdings), Pillar Hall fuses modern British cuisine with continental European & Asian dishes. Both Samantha & Lorena have extensive experience catering for high profile events including fashion parties at the V&A and Formula 1, as well as working with Michelin Starred restaurants.



THE EXPERIENCE

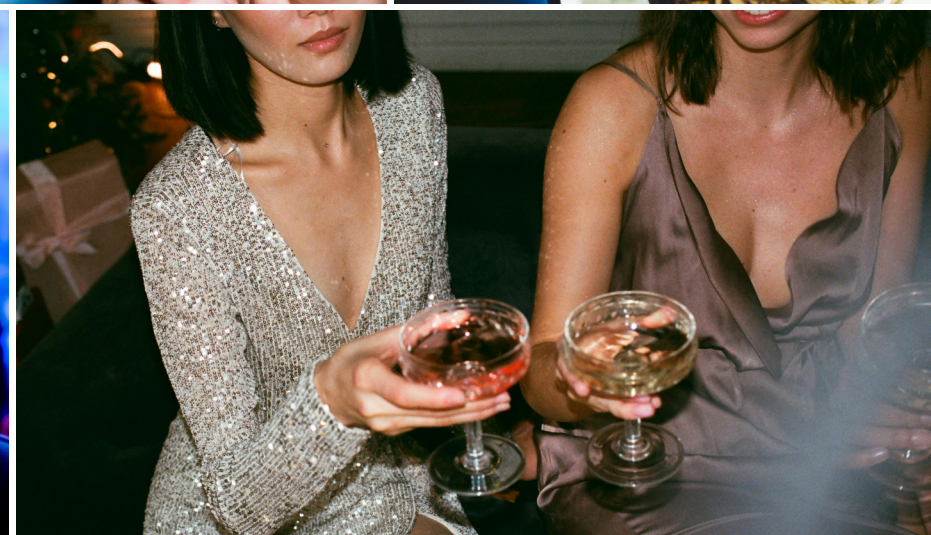
Upstairs @ Pillar Hall, our spectacular event space, is open to the public for dinners with live music at weekends.

With tailored hospitality, including bespoke menus and a dedicated lighting and sound system for each area, Upstairs @ Pillar Hall has been designed to create the ultimate show stopping venue, to wow your guests and make your hosting experience seamless, with our specialist events team on hand to ensure everything goes as planned.

Keep the party going until 2am with a late-night license available on request.

OUR SUPPLIERS

Have a vision but not sure how to execute it? Work with our trusted suppliers for live music, DJs, florists, immersive entertainment and so much more to make your event truly unique.



CONNECTIVITY

UNDERGROUND

WEST KENSINGTON (Circle & District Lines)
8 minute walk

BARONS COURT (Piccadilly Line)
9 minute walk

HIGH STREET KENSINGTON (Circle & District Lines)
12 minute walk

HAMMERSMITH STATION (Hammersmith & City Line)
15 minute walk

EARLS COURT (Piccadilly, Circle & District Lines)
20 minute walk, 5 minute drive

OVERGROUND

PILLAR HALL is located directly opposite Kensington

OLYMPIA STATION (London Overground)

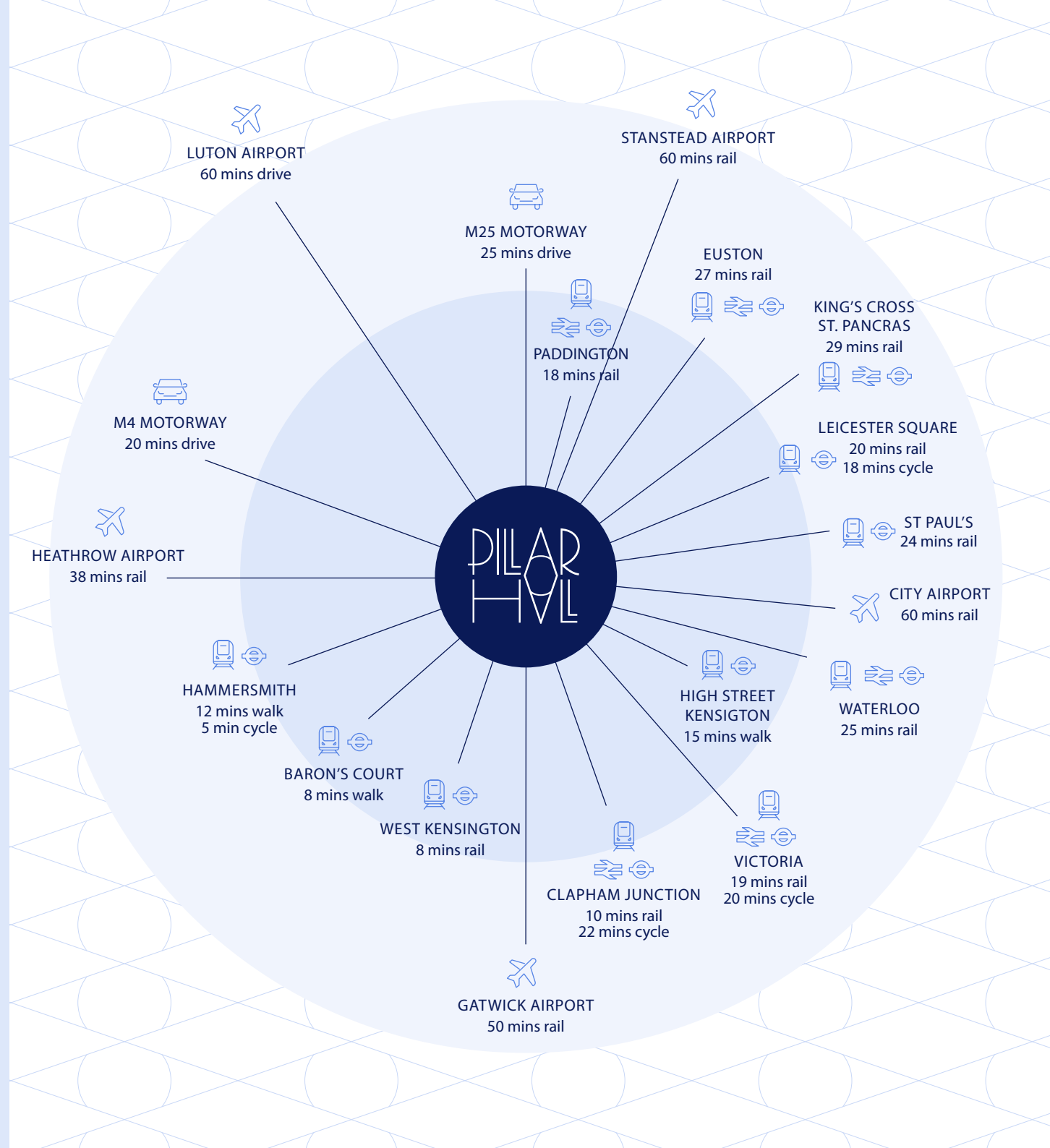
1 stop from SHEPHERD'S BUSH (Central Line)

1 stop from WEST BROMPTON (District Line)

AIR

GATWICK: 30 minute train from Clapham Junction

HEATHROW: Piccadilly line from Baron's Court
35 minute drive



WHERE TO FIND US

Pillar Hall is located in the heart of the historic Olympia estate, connected to both the existing Exhibition Hall and the recently developed Hyatt Regency.



Pillar Hall, Olympia Way, London

Pillar Hall, Olympia Way,
London