

A large crowd of people is seen from behind, filling a large, arched brick hall. They are all looking towards a stage area in the distance where bright stage lights are shining. Many people in the crowd have their arms raised, some holding up smartphones to capture photos or videos. The hall's architecture features high ceilings with exposed pipes and large arched openings in the walls. The overall atmosphere is one of a high-energy live music event.

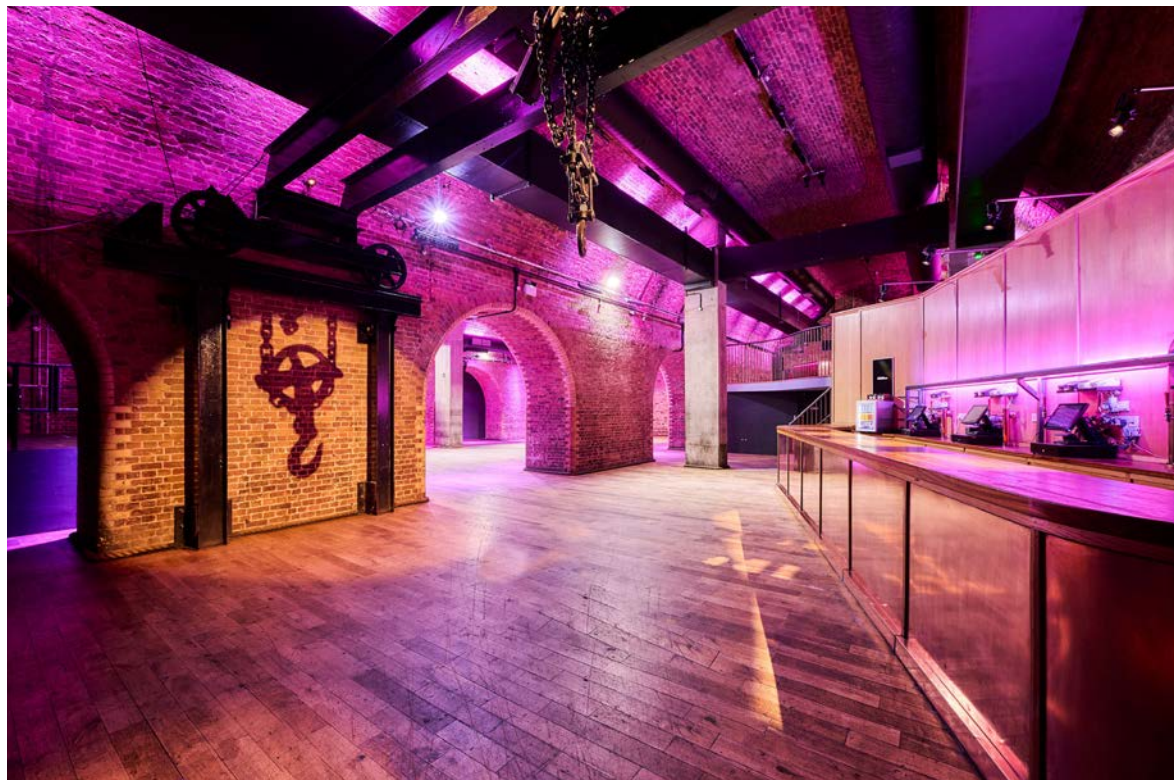
the steel yard.

About us

Discover our flexible event space in the heart of London. Situated in three beautifully restored Victorian railway arches, we offer a blank and versatile canvas to host a dynamic array of events.

Our awe-inspiring arches were once a hub for Hanseatic trading, dating back to the 12th century. When trading ceased, a railway station was built on the remains of the historic site, with some of the infrastructure used to haul the locomotives still proudly displayed today.

The Steel Yard is a platform, destination and a lifestyle.



Our space



Our three Arches combine to create a flexible event space for over 800 people to move seamlessly around the venue, with the spaces being reset as the day or evening activities evolve.

They can also be hired independently to cater for your specific event requirements.

700 live concert capacity

800 corporate reception capacity

1000 club capacity

Arch 1

Our largest area features a flexible staging solution, extensive lighting, audio and AV fixtures, powerful WIFI and a scalable LED video wall display.

Capacity

- + 200 dinner
- + 270 theatre
- + 320 Trestle Table
- + 600 standing
- + 700 live

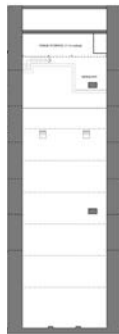
Ideal for

- + Conferences
- + Hybrid events
- + Theatre and fashion shows
- + Networking events
- + Live music
- + Christmas parties
- + Product launches
- + Brunches
- + Club Events

Ground floor



Mezzanine



Fun Facts

The boards of our prestigious stage have been trod by Jarvis Cocker, Hot Chip, Wretch 32, Skepta, hosted world renowned DJ's including Andy C, Michael Bibi, Hot Since 82, Honey Dijon, Patrick Topping and Pendulum, and been graced by BBC's Scott Mills and Annie Mac.



Arch 2

Our main bar, combine with Arch 1 and install a curtain for a grand reveal!

Capacity

+ 200 standing

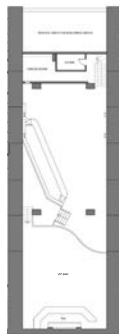
Ideal for

- + Networking events
- + Christmas parties
- + Product launches

Ground floor



Mezzanine



Mezzanine

The additional Mezzanine level, located above the main event space, features a fully stocked bar, ideal for a VIP sponsored area or a delegate lounge.



Arch 3

With a private entrance and its own bar, this space can be booked independently, or used as a reception area before moving into Arches 1 and 2.

Capacity

- + 100 theatre
- + 200 standing

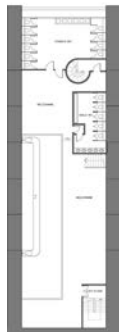
Ideal for

- + Networking events
- + Theatre and fashion shows
- + Gallery
- + Christmas parties
- + Product launches

Ground floor

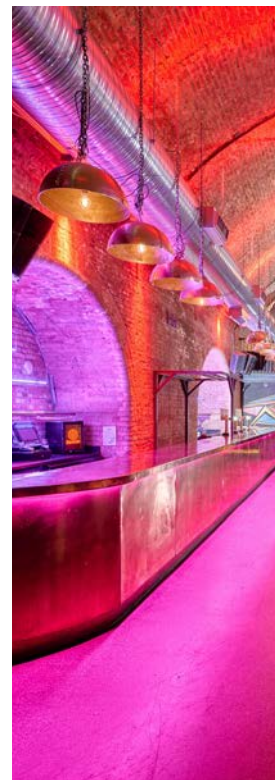


Mezzanine



Balcony

Located above the main event space, the Balcony is often transformed into a cloakroom or professional kitchen for catered events, with built-in extraction fans.



Additional Facilities

Green Room

This backstage area provides a private space for performers with lavatory facilities.



Dressing Room

Located behind the stage, this space is equipped with a private shower and toilet.

When not required for performers, it is ideal as a medic office.



The image shows the interior of a large, historic industrial building. The space is characterized by its high ceiling with exposed steel beams and a brick wall with several large arches. On the left, there is a small bar area with stools and a large industrial wheel mounted on the wall. On the right, there is a long, curved wooden bar. The floor is made of polished wood, and the overall atmosphere is industrial and historic.

the steel yard.

13-16 Allhallows Lane,
London, EC4R 3UE